

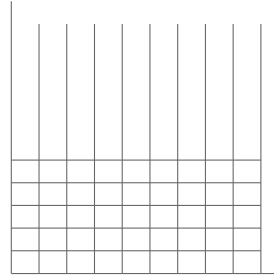
9) Ashley collects coins. Over a three-year period she collected 1,000 nickels. After organizing them by year, she found that the number of nickels from a given year was related to the number minted that year:



11) The number of marriage licenses issued by Clark County Nevada, the county where Las Vegas is located, has been decreasing since the year 2000:

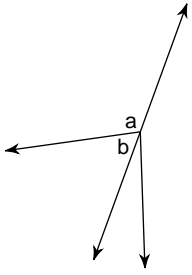
Year	Marriage Licenses
2001	136,000
2003	139,000
2006	125,000
2010	114,000
2011	105,000
2013	98,000

This can be modeled by the equation $y = -1000x + 139000$ where x is the year and y is the number of marriage licenses issued.

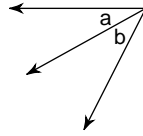


Name the relationship: complementary, supplementary, vertical, or adjacent.

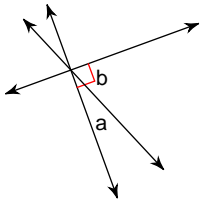
42)



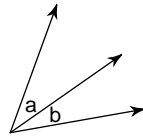
43)



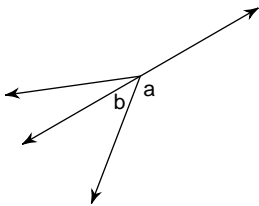
44)



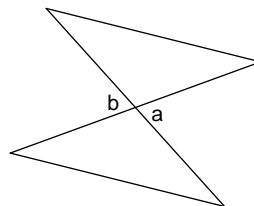
45)



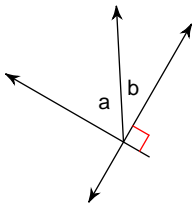
46)



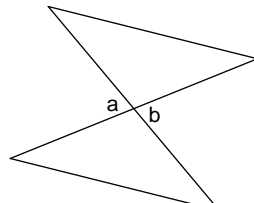
47)



48)



49)





77)

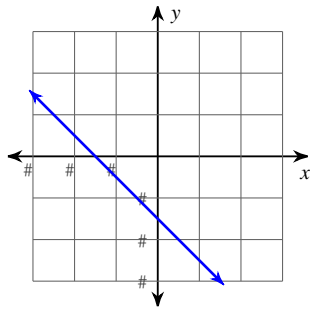
City	Population
Miami	399,457

City	Population
Irvine	

City	Population
------	------------

City	Population
------	------------

102)



103)

